

### **Central Laboratory**

607- 255- 8202  
877- 645- 5522  
240 Farrier Drive  
P.O. Box 5786  
Ithaca, New York 14850- 1257  
  
(FAX 607- 253- 4000)

### **Eastern Laboratory**

518- 255- 5681  
877- 645- 5524  
111 Schenectady Avenue  
Wheeler Hall, SUNY  
Cobleskill, New York 12043  
  
(FAX 518- 255- 5682)

### **Northern Laboratory**

315- 379- 3930  
877- 645- 5523  
34 Cornell Drive  
Veterinary Science Building  
Canton, New York 13617  
  
(FAX 315- 379- 3931)

### **Western Laboratory**

585- 786- 2555  
877- 645- 5525  
  
36 Center St, STE A  
Warsaw, NY 14569  
  
(FAX) 585- 786- 2550

## **Vision Statement**

**We will continue to be a definitive resource for support of on- farm milk quality and food safety**

## **Mission Statement**

**QMPS exists to meet the needs of producers, veterinarians and the dairy industry through on- farm service, diagnostics, education and research.**

**We are a science- based organization utilizing the most effective methods and technology to help producers improve dairy product quality and safety.**

**Our work contributes to consumer confidence in the dairy industry.**

**We accomplish our goals through an environment that encourages teamwork and continuing education.**

<https://ahdc.vet.cornell.edu/sects/QMPS/>



## **Laboratory Proficiency Testing Program**



**“Helping laboratories monitor quality”**

**Cornell University**  
College of Veterinary Medicine

## Quality Assurance Service

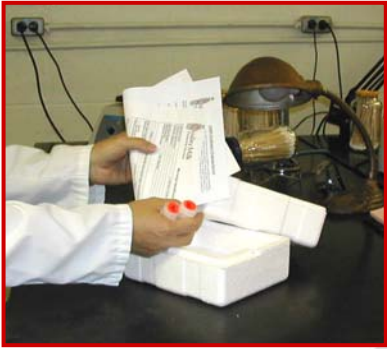
Quality Milk Production Services (QMPS) is pleased to announce

the offering of a Laboratory Proficiency Testing Program to large and

mixed animal practices.

The purpose of this program is to provide an external quality assurance program to veterinary practices as a means for assessing and monitoring laboratory methods and procedures for diagnosis of intramammary infections.

This program should also serve as a valuable resource for education, self-assessment, quality assurance and public confidence.



## The Process

### Enroll in the program

Contact one of the Quality Milk Production Services (QMPS) Laboratories by telephone to enroll. At the beginning of each calendar quarter, proficiency samples will be shipped to the participating veterinary practices.

### Receive the kit

Commercial milk inoculated with a single strain of ATCC mastitis-causing pathogen will be shipped from a QMPS laboratory.

### Identify the pathogen

The veterinary practice will analyze the inoculated milk to identify the unknown pathogens, performing any necessary tests. The test results and final pathogen identification will be entered on the Microbial Identification forms.

### Return the identification

Fax or mail the completed Microbial Identification forms to the QMPS Cobleskill laboratory within two weeks.

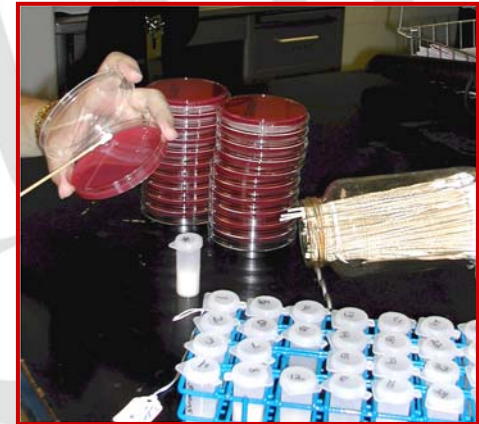
### Review the results

QMPS will review the referring lab's results and provide a confidential report of their findings. Laboratory guidelines and recommendations will be provided to the enrolled facility to improve the performance and accuracy of the laboratory when indicated. A Certificate of Participation is provided to all program enrollees.

## Service Fees

An annual fee of \$250.00 will include four quarterly shipments, each consisting of two unknown pathogens, Microbial Identification Forms, survey and a confidential report upon completion of the analysis.

Methods of payment include check, MasterCard or Visa, cash or money order made payable to Quality Milk Production Services. Prepayment is required.



## Important Information

The material you receive for testing contains pathogenic organisms. By participating in this program, you assume all risks and responsibility in connection with the receipt, handling, storage, use and disposal of the material.